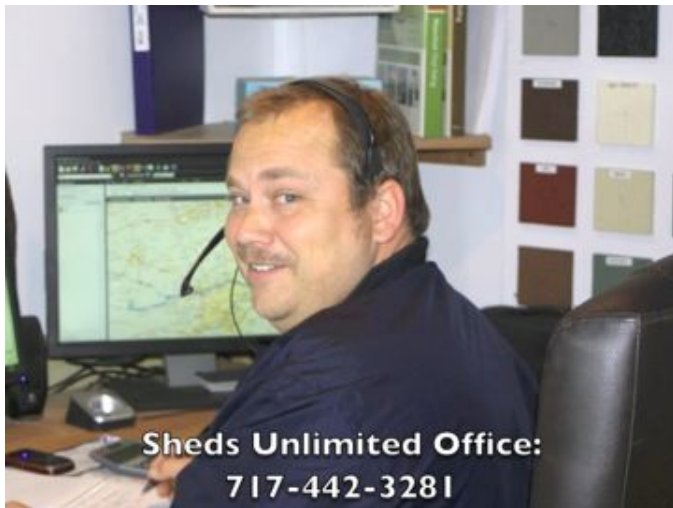




Sheds Unlimited
281 White Horse Road
Gap, PA 17527
717-442-3281 – office@shedsunlimited.net
www.shedsunlimited.net

Sheds Unlimited Prefab Kit Assembly Instructions

This document contains the Sheds Unlimited Inc. assembly instructions for a prefab or piece kit. It is designed to go along with the Kit Assembly Video in a step-by-step process.



If you have any additional questions, feel free to contact our professional office team at 717-442-3281.

Delivery of Kit

After placing the order with Sheds Unlimited, the kit arrives at your location on a Sheds Unlimited truck or a common carrier. The kit arrives as a package, so your first step should be to take the package apart and carry it into the backyard.



Proper Tools:



Next, be sure to have the proper tools available.

Air powered nailers and staplers could work fine, but a good battery powered screw gun and sawzall could do the same job. Just be sure to have extra batteries and the proper screws needed to assemble the building.

Preview of



Prefab



Some may wish to do it the old fashioned way and use a hammer and nail.

Instructions

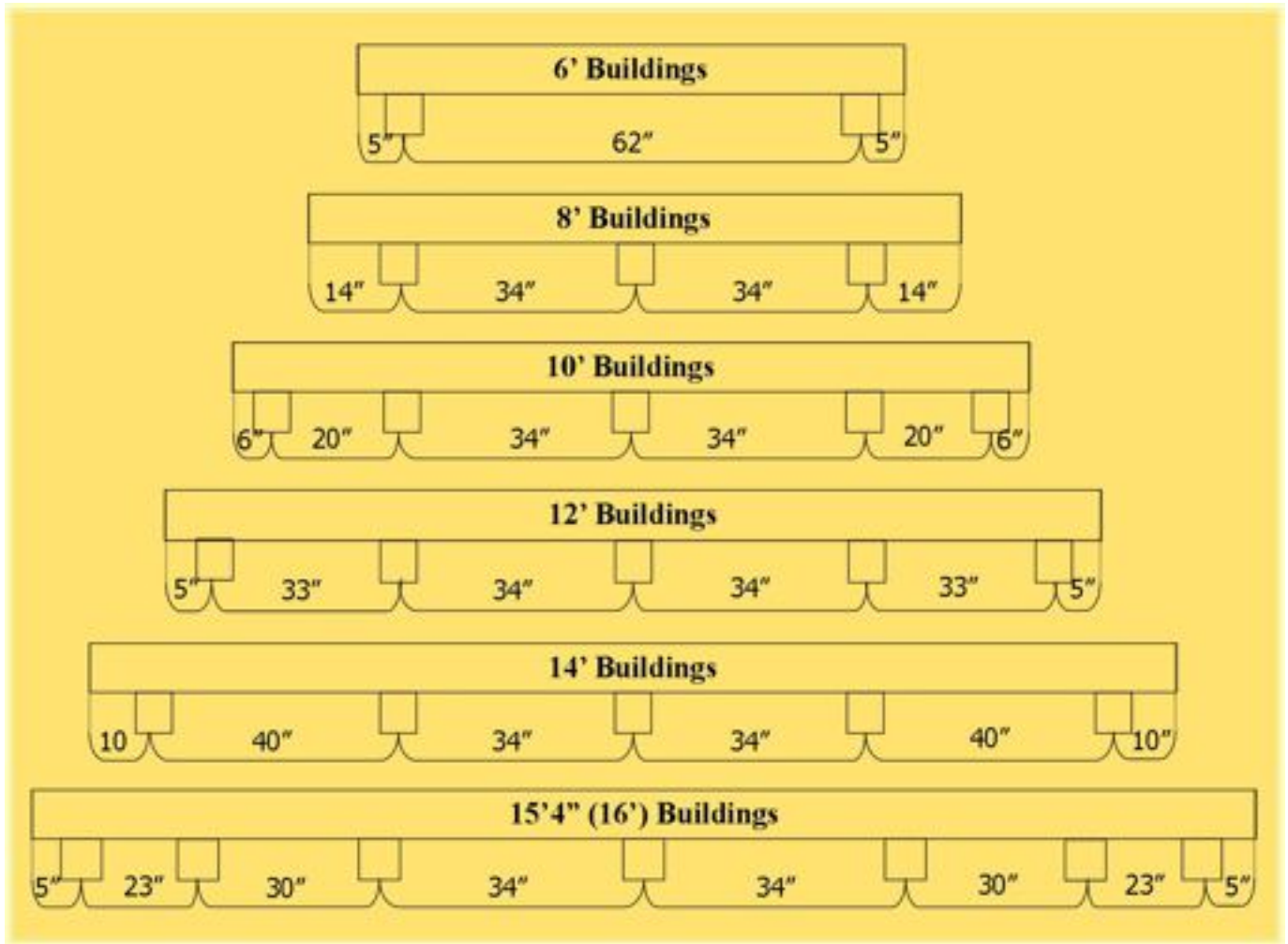
Be sure to have a good supply of 3" and 1 3/4" nails or screws for assembly of the building, and 1" nails with a wide head for vinyl and roofing installation. You could also use 1 1/2" staples for the OSB wall or roof sheeting. But do not use staples on DuraTemp.



Floor Assembly:

We'll begin our project with the floor assembly. 6' and 8' buildings may come with the floor partially or completely assembled.

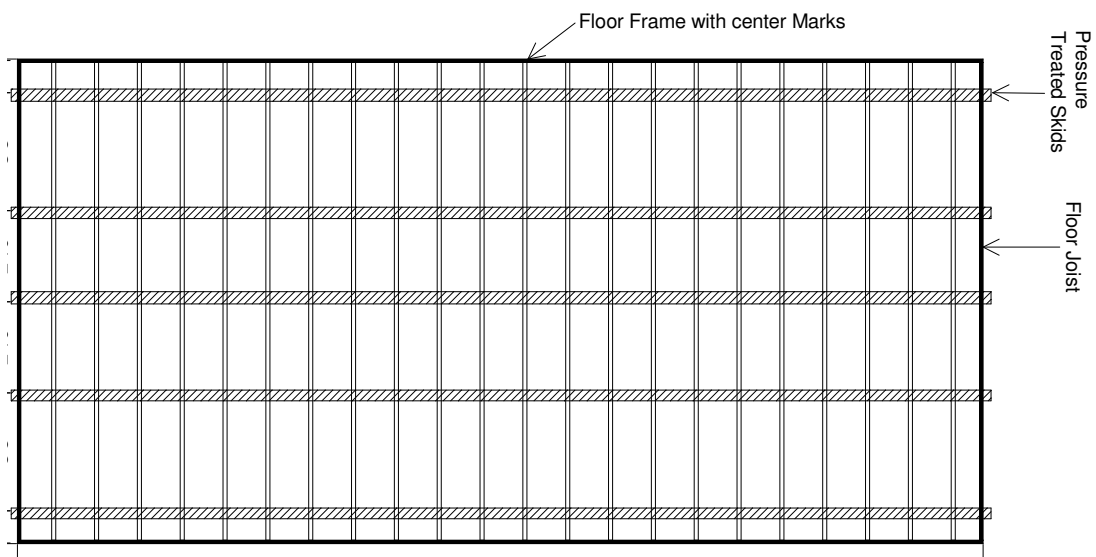
When the floor needs assembly, first lay the skids out in their place. The 6' buildings will have two skids, the 8' three skids, the 10', 12', and 14's will have five and the 16' buildings according to the following diagram that can be found at <http://www.shedsunlimited.net/ShedPads.html>



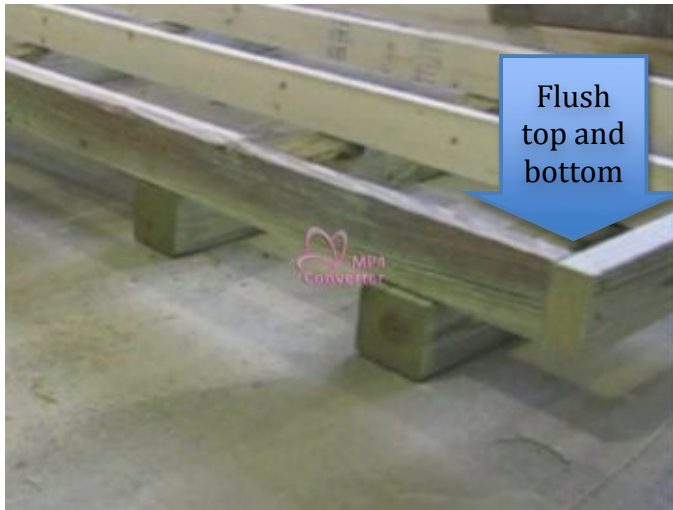
Lay out the skids according to the diagram.

After placing the skids, find the 2x4 frames which are marked every 16" to center. This will be the piece that we fasten the floor joist to.

Floor Framing Layout



Now lay out the joist, or the cross pieces, across the 4x4 skids in preparation to fasten them to the frame.



Pay special attention that the end joist is flush at the top and at the end of the frame.

Then fasten the remaining joists at the center marks along the frame on both sides of the floor. Again be sure to keep the 2x4 joist flush at the top.



Now we are ready to nail the floor joists into the pressure treated 4x4 skids. Mark along the end where each skid should be placed

Place Tape Measure on center 4x4 and nail Joist 16" center



Then begin fastening to the 4x4's on the outside skids. Toenail one or two 3" nails or screws at every place where a joist meets a 4x4 skid.



Next, place a tape measure on top of the floor joist along the middle 4x4. Be sure each floor joist is centered at the 16" mark as it is nailed to the 4x4. After the middle section is completed, finish nailing the remainder of the floor joist to the skids.



Applying Flooring Plywood

Applying the floor plywood is our next step. We begin in the corner a 4'x8' sheet of 5/8" plywood.

After ensuring the piece is flush with the floor frame, nail along the 8' length of the piece and then the ends. If necessary, use a sledgehammer to nudge one end of the floor in order to square up the floor and plywood. Continue along the length of the floor with 4'x8' sheets then end

with a full piece, a 4'x2' 4'x4' or 4'x6' piece. Next return to the original end and begin with a 4'x4' piece then continue with 4'x8' sheets and fill in the end with a full piece, a 4'x2' 4'x4' or 4'x6' piece.